

MANAV RACHNA UNIVERSITY

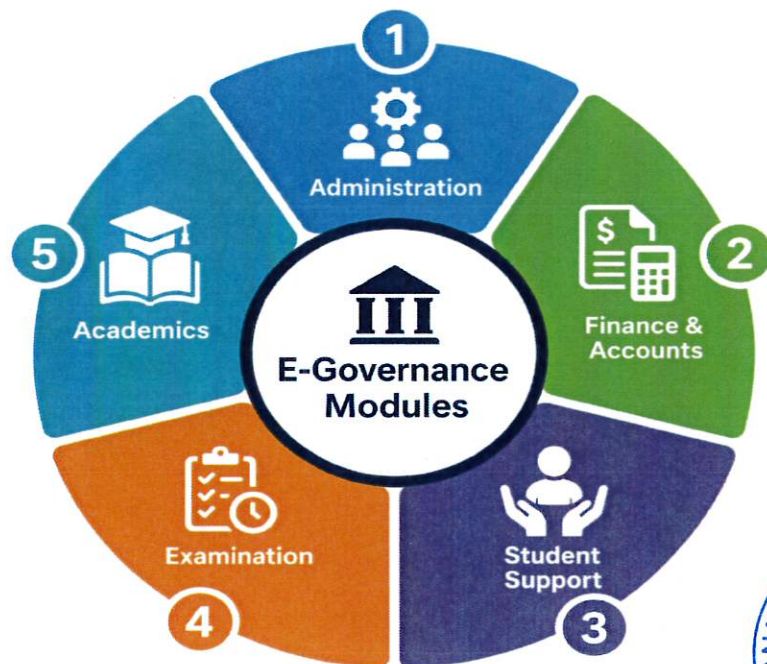
E-GOVERNANCE REPORT

Manav Rachna University (MRU) is committed to leveraging advanced digital technologies to enhance transparency, efficiency, and accountability across its administrative and academic processes. E-Governance at MRU serves as a strategic initiative aimed at transforming traditional systems into a paperless, efficient, and technology-driven ecosystem. The university has implemented e-governance across key functional areas including admissions, academics, examinations, finance, and human resources. The iCloudEMS platform is extensively used to manage student admissions, course registration, academic progress, fee transactions, and seamless communication.

Faculty members and students benefit from integrated digital platforms that support learning management, attendance tracking, evaluation processes, and resource sharing. Additionally, MRU ensures transparency and accessibility through its regularly updated university portal, grievance redressal systems, feedback mechanisms, and digital support services. Through these initiatives, MRU aligns its processes with the principles of good governance—accessibility, responsiveness, and sustainability.

E-Governance Initiatives

MRU has adopted a proactive approach to e-governance by integrating digital technologies across various domains to improve institutional efficiency and transparency. The university's e-governance initiatives are designed to foster a seamless, paperless, and student-centric environment that supports academic excellence and administrative agility.

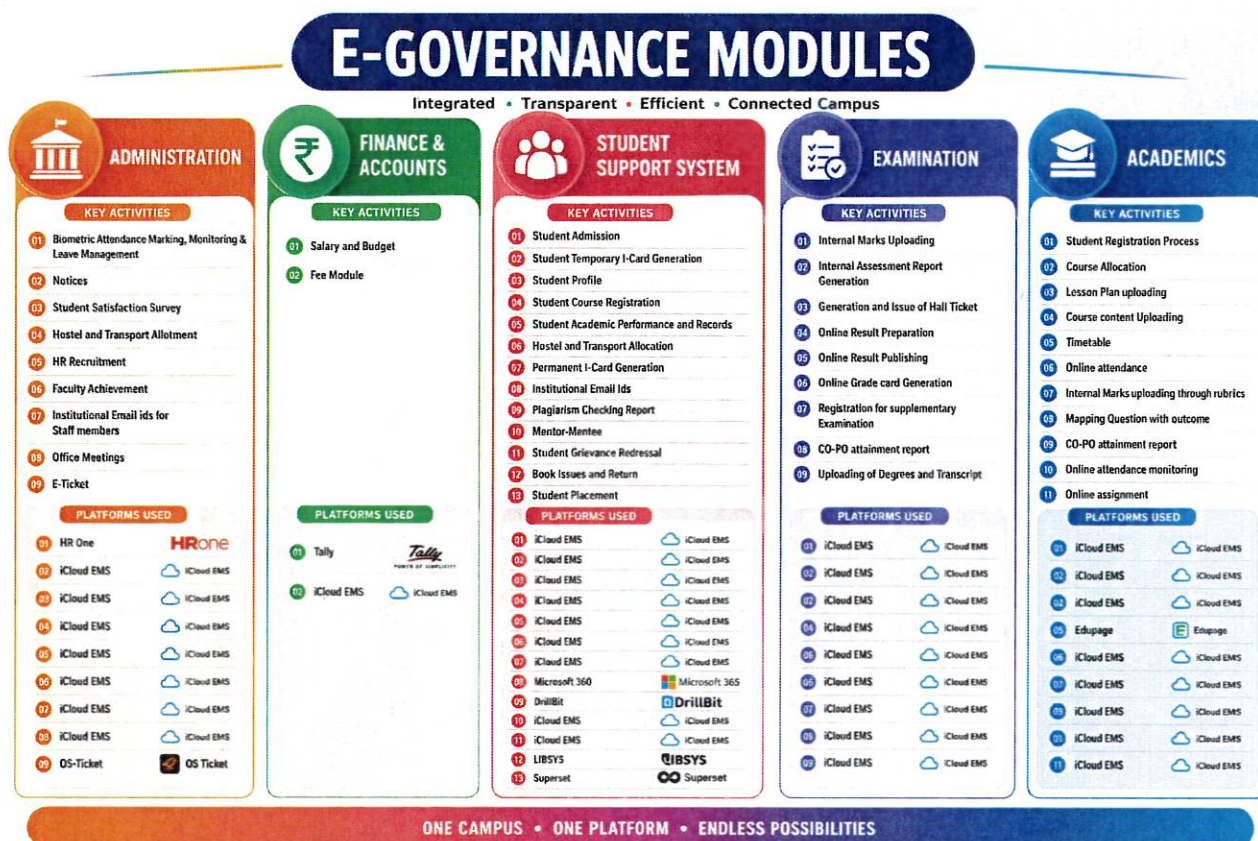


E-Governance Modules



E-Governance initiatives adopted

MRU has remained at the forefront of technological advancement in higher education by embracing robust e-governance strategies. The admission process has been fully digitized with online applications and real-time status updates. Examination-related processes such as admit cards, evaluation, and result declaration have also been migrated to digital platforms.



HRONE: MRU has deployed a HRONE will serve as a centralized platform for various HR-related activities, including leave and attendance management, and access to important HR documents, policies, performance evaluations, and recruitment. This system reduces manual intervention, ensures transparency, and enhances the efficiency of HR processes.

EMS: EMS System was used to provide seamless access to student admission, academic records, attendance, notifications, assignments, examination, Grade card etc

Library Management System: - Manav Rachna University (MRU) has embraced modern technology to enhance its library services through an advanced Library Management System (LMS) Koha.

Grievance Module: - Manav Rachna University (MRU) has implemented a dedicated grievance module as part of its broader e-governance framework. This digital system is designed to offer a transparent, accessible, and efficient platform for students, faculty, and staff to report issues and seek redressal for any concerns. The grievance module plays a critical role in enhancing institutional accountability and fostering a responsive administrative environment.

Staff Achievement Module: - Faculty members update their personal, research and Academic data in the profile section of iCloudEMS.



Areas of e governance	Year of implementation
Administration	
HRONE	2025
Starlink Biometric Attendance Monitoring for Faculty and Staff Members	2015 - 2025
i-cloud EMS	2017
Koha Library Automation	2020
OSTicket Helpdesk Service Portal	2020 - 2025
Finance and Accounts	
Tally	2016
i-cloud EMS	2017
Student Admissions and Academics	
i-cloud EMS	2017
Koha Library Automation	2020
Superset	2020
Examinations	
i-cloud EMS	2017

Over the years, the EMS (Education Management System) has continuously evolved to meet the dynamic requirements of students and faculty members. New modules have been systematically introduced to enhance academic processes, student support services, and administrative efficiency. As illustrated in the diagram, these modules—ranging from student admission and academic performance tracking to grievance redressal, mentor-mentee systems, and advanced communication features—have been implemented in a phased, year-wise manner. This gradual expansion reflects the institution's commitment to digital transformation, user-centric design, and continuous improvement in service delivery.

Continuous Improvement and Integration of all modules in EMS – Year Wise

Module	Year
1. Student Admission on iCloudEMS	2019
2. Academic Performance and Records on iCloudEMS	2020
3. Examination module on iCloudEMS	2021
4. Grievance Redressal	2022
5. MENTOR-MENTEE module on EMS	2023
6. Certificate Uploading by student and Manav Rachna comprehensive Score points allocation by the mentor	2025



7. Central Communication	2025
8. Automatic batch creation	2025
9. User-Friendly EMS Application for the Students and Faculty (Authenticator)	2025

LS

